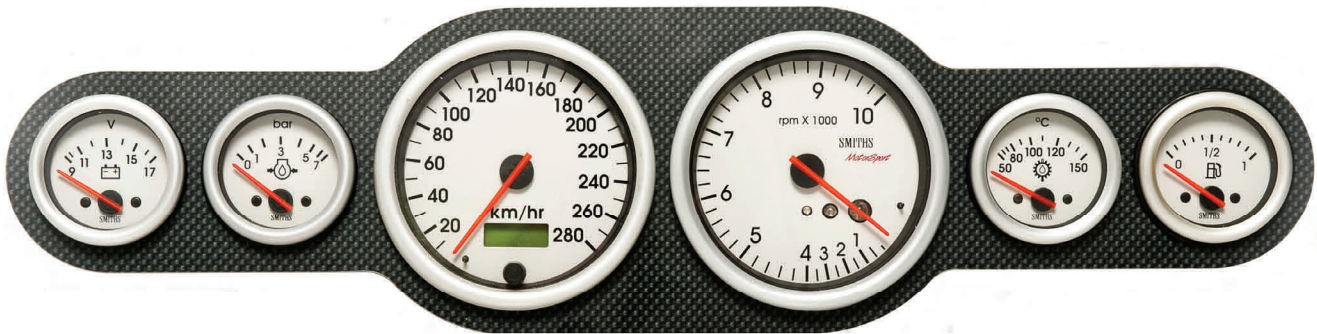


Robinson Instruments

Automotive & Marine Instrument Specialists



SMITHS Telemetrix Range

Part Number	Description	Detail	Price
TAC1-1052-00	Analogue clock		
TAC1-1052-01	Analogue clock	Remote reset	
TAM1-0052-03	Ammeter	30-0-30 Amps	
TAM1-0052-06	Ammeter	60-0-60 Amps	
TCT1-1452-12	Water temp	40 - 140°C	
TCT1-3832-002	Water temp mechanical	40 - 140°C	
TES3-1B32-00	Speedometer, 80mm	0 - 140mph	
TES3-1B32-01	Speedometer, 80mm	0 - 180mph	
TES3-1B32-02	Speedometer, 80mm	0 - 240kmh	
TES3-1B32-03	Speedometer, 80mm	0 - 280kmh	
TES5-1B32-00	Speedometer, 100mm	0 - 140mph	
TES5-1B32-01	Speedometer, 100mm	0 - 180mph	
TES5-1B32-02	Speedometer, 100mm	0 - 240kmh	
TES5-1B32-03	Speedometer, 100mm	0 - 280kmh	
TET3-5B32-00	Tachometer, 80mm	0 - 8000rpm - 2, 3 or 4 pulses/rev	
TET3-5B32-01	Tachometer, 80mm	0 - 8000rpm - 1, 2 or 4 pulses/rev	
TET3-5B32-03	Tachometer, 80mm	0 - 14000rpm - 1 or 2 pulses per rev	
TET5-5B32-00	Tachometer, 100mm	0 - 8000rpm	
TFC1-1552-00	Fuel level	0 - 1/2 - 1	
TFP1-3832-02	Fuel pressure, mechanical	0 - 2Bar	
TFP1-3832-07	Fuel pressure, mechanical	0 - 7Bar	
TGD1301-64078	Dual oil press./Water temp, mech	0 - 100psi / 90 - 230°F	
TMP1-3832-21	Turbo boost, mechanical	Minus 1 to +2Bar	
TOP1-1552-07	Oil pressure	0 - 7Bar	
TOP1-1552-10	Oil pressure	0 - 10Bar	
TOP1-3832-07	Oil pressure, mechanical	0 - 7Bar	
TOP1-3832-10	Oil pressure, mechanical	0 - 10Bar	
TOT1-1452-15	Oil Temperature	50 - 150°C	
TOT1-3832-002	Oil temperature, mechanical	40 - 150°C	
TTT1-1452-15	Transmission oil temp	50 - 150°C	
TVO1-1052-02	Voltmeter, plain dial	9 - 17volts	
TVO1-1052-03	Voltmeter, coloured sectors	9 - 17volts	



SMITHS Telemetrix Range (continued)

Part Number	Description	Details	Price
Telemetrix Range Senders			
TT3001-8N	Water temp sender	1/8NPT	
TT3005-8N	Oil temp sender	1/8NPT	
PTR3000-8N-10	Oil pressure sender 7Bar	1/8NPT	
PTR3000-8N-14	Oil pressure sender 10Bar	1/8NPT	
TA9110-000	Fuel sender, top mount	5 hole flange	
Speed Sensors For Electronic Speedometers			
EMP34-1	Inductive speed sensor, with LED operation indicator	M8. C/W lock nuts	

SMITHS MotorSport

Part Number	Description	Details	Price
Prosport F1 - Featuring Shift Lamps and Max Revs Recall (white dial)			
RET3-1A32-19	Prosport F1 tachometer, compressed scale, shift lamps & max revs recall	8000 (0 - 3000 compressed)	
RET3-1A32-20	Prosport F1 tachometer, compressed scale, shift lamps & max revs recall	10000 (0 - 4000 compressed)	
RET3-1A32-21	Prosport F1 tachometer, compressed scale, shift lamps & max revs recall	12000 (0 - 5000 compressed)	
RET3-1A32-22	Prosport F1 tachometer, compressed scale, shift lamps & max revs recall	14000 (0 - 7000 compressed)	
RET3-1A32-23	Prosport F1 tachometer, compressed scale, shift lamps & max revs recall	16000 (0 - 8000 compressed)	
RET3-1A32-24	Prosport F1 tachometer, compressed scale, shift lamps & max revs recall	18000 (0 - 9000 compressed)	
Prosport F1 Range Featuring Shift Lamps and Max Revs Recall (white dial)			
RET5-1A32-19	Prosport F1 tachometer, compressed scale, shift lamps & max revs recall	8000 (0 - 3000 compressed)	
RET5-1A32-20	Prosport F1 tachometer, compressed scale, shift lamps & max revs recall	10000 (0 - 4000 compressed)	
RET5-1A32-21	Prosport F1 tachometer, compressed scale, shift lamps & max revs recall	12000 (0 - 5000 compressed)	
RET5-1A32-22	Prosport F1 tachometer, compressed scale, shift lamps & max revs recall	14000 (0 - 7000 compressed)	
RET5-1A32-23	Prosport F1 tachometer, compressed scale, shift lamps & max revs recall	16000 (0 - 8000 compressed)	
RET5-1A32-24	Prosport F1 tachometer, compressed scale, shift lamps & max revs recall	18000 (0 - 9000 compressed)	